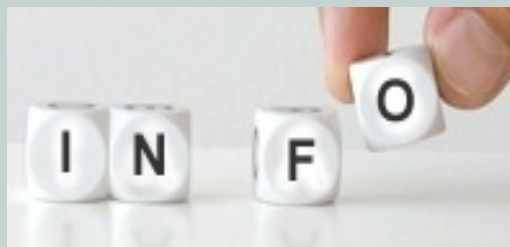


SIEMENS



Industry Automation

USO ESTERNO

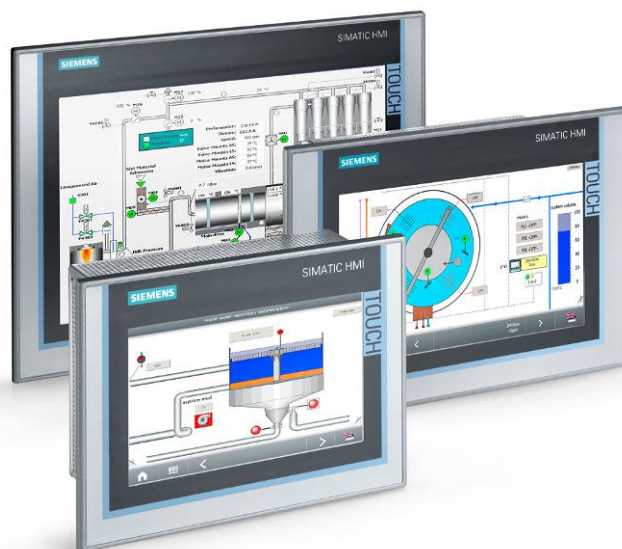
Nr. 2011/2.4/34

Data: 1.8.11

HMI: IPC

Annuncio nuovo prodotto SIMATIC Panel PC IPC277D

A partire da oggi è disponibile il nuovo **SIMATIC Nano Panel PC IPC277C** con processori Intel Atom E6x0!



Caratteristiche chiave del SIMATIC IPC277D

- Basso assorbimento di corrente e performance grazie ai processori Intel Atom E640, 1GHz con Hyperthredding e 1GB RAM
- Uso non-stop e sicurezza dei dati grazie a memorie di massa allo stato solido (CF fino a 8GB, SSD da 50GB)
- Memoria ritentiva non volatile da 128 kbyte per WinAC RTX (F) 2010 – usabile anche senza batteria
- Efficace autodiagnostica con software di diagnostica preinstallato
- Flessibilità della scelta dei sistemi operativi:

Windows XP Pro, Windows Embedded Standard 2009, in preparazione: Windows 7 Ultimate e Windows Embedded 7

- Bundles con Software WinCC V11 RT Advanced e/o WinAC RTX (F) 2010 preinstallato in preparazione
- WinCC V11 CS Advanced ha già nel catalogo hardware gli IPC277D. Nelle versioni precedenti di WinCC flexible non c'è la possibilità di utilizzare la risoluzione del IPC277D.
- Interfacce a bordo: 2x GBit Ethernet, 3x USB 2.0 e 1x RS232
- Nuovi frontali in formato wide (16:9) con:
 - 7" (risoluzione 800x480 pixel), 9" (800x480) e 12" (1280x800) con Touch resistivo (15" e 19" con USB frontale in preparazione)
 - Retroilluminazione a LED (MTBF max. 80.000 h) con totale possibilità di oscuramento
 - Luminosità fino a 400CD/m²
 - Design uniforme, accattivante, senza cornice



Sicurezza del Investimento

Grazie all'uso dei Processori Intel Atom della serie industriale, i SIMATIC IPC227C e IPC277D saranno disponibili alla vendita per un lungo tempo (3-4 anni), inoltre saranno disponibili i ricambi dei componenti per ulteriori 5 anni dalla data di dismissione.

[Dati tecnici del Nanobox 227D e Nano Panel PC 277D](#)

Ulteriori estensioni per il SIMATIC IPC277D

	Codice d'ordinazione
Touch Pen	6AV7672-1JB00-0AA0
SIMATIC IPC Service USB-Flashdrive, 8GB (SLC) USB 2.0, Image & Partition Creator e BIOS-Manager preinstallato	6AV7672-8JD01-0AA0
SIMATIC IPC USB-Flashdrive, 8 GB (SLC) USB 2.0, incluso SIMATIC PC BIOS-Manager, bootable, custodia in metallo	6ES7648-0DC50-0AA0
Estensione della garanzia a 36 mesi	A5E00509961

Product Manager,

The product features of SIMATIC IPC227D and 277D in detail

Product name	SIMATIC HMI IPC277D (Nanopanel PC)	SIMATIC IPC227D (Nanobox PC)
Platform	Intel Atom E640	Intel Atom E6x0
Order No.	6AV7881-...	6ES7647-8A...
Delivery release	August 2011	August 2011
Fronts / Displays		
Fronts	<ul style="list-style-type: none"> • 7" Widescreen • 9" Widescreen • 12" Widescreen • 15" / 19" Widescreen in preparation 	
Resolution	<ul style="list-style-type: none"> • 7": 800 x 480 • 9": 800 x 480 • 12": 1280 x 800 	
Control	Touch	
Degree of protection front / rear	• Front side: IP65 / Rear side: IP20	
Background illumination	<ul style="list-style-type: none"> • LED • 100 % dimmable 	
System architecture		
Basic design	Panel PC	<ul style="list-style-type: none"> • Flexible Box PC • Fan-less concept • Dust protected housing
Processor and main memory	Atom E640, 1.0 GHz, 2 Threads, 1 GB RAM	<ul style="list-style-type: none"> • Atom E620, 600 MHz, 2 Threads, 512 MB RAM • Atom E640, 1.0 GHz, 2 Threads, 1 GB RAM • Atom E660, 1.3 GHz, 2 Threads, 2 GB RAM
Chipset	Intel Controller Hub EG20T	Intel Controller Hub EG20T
Power save mechanisms	<ul style="list-style-type: none"> • Wake-on-LAN • Speed-Step / Sleep States 	<ul style="list-style-type: none"> • Wake-on-LAN • Speed-Step / Sleep States
Slots for expansion	n/a	• 1x PCIe x1 as device variant
Graphics		
Graphics controller	integrated in Intel Atom CPU E640	integrated in Intel Atom CPU E6x0
Graphics memory	8 to 256 MB (Shared Memory)	8 to 256 MB (Shared Memory)

Resolutions, Freq., Colors		up to 1920 x 1200, 60 Hz, 32 Bit colors
Power supply		
24 V DC	yes	yes
Mains switch	yes	yes
Drives		
CompactFlash Drive (optional)	<ul style="list-style-type: none"> • SIMATIC PC CompactFlash • 2 GB, 4 GB, 8 GB • accessible from outside 	<ul style="list-style-type: none"> • SIMATIC PC CompactFlash • 256 MB, 2 GB, 4 GB, 8 GB • accessible from outside
Solid-State Drive (optional)	<ul style="list-style-type: none"> • SSD, 50 GB, 2.5", SATA • Single Level Cell Architektur (SLC) 	<ul style="list-style-type: none"> • SSD, 50 GB, 2.5", SATA • Single Level Cell Architektur (SLC)
Hard disk drive (optional)	n/a	<ul style="list-style-type: none"> • 250 GB, 2.5", SATA
Interfaces		
Ethernet	2 x 10/100/1000 MBit/s (RJ45), teaming ability	2 x 10/100/1000 MBit/s (RJ45), teaming ability
PROFINET	PROFINET RT via Standard Ethernet	PROFINET RT via Standard Ethernet
USB	4 x USB 2.0	4 x USB 2.0
Graphics interface	n/a	DVI-D (digital)
Serial (COM1)	1x RS232	Configurable: <ul style="list-style-type: none"> • 1x RS232 or • 1x RS485 or • CAN (compatible with ISO 11519, ISO 11898 and SAEJ2411)
additional serial interfaces	n/a	<ul style="list-style-type: none"> • 3x RS232, Send / receive data • as device variant
additional digital interfaces	n/a	<ul style="list-style-type: none"> • 4x digital inputs / outputs, • 24 V DC • as device variant
Monitoring functions		
Temperature	yes	yes
Mass memory	yes	yes
BIOS battery	yes	yes
Watchdog	yes	yes
Monitoring software	<ul style="list-style-type: none"> • SIMATIC IPC DiagBase (included) • SIMATIC IPC DiagMonitor (optional) 	<ul style="list-style-type: none"> • SIMATIC IPC DiagBase (included) • SIMATIC IPC DiagMonitor (optional)
Ambient conditions		
Vibration	approx. 1 g	approx. 1 g

during operation (preliminary)		Note: restrictions during HD operation
Shock during operation (preliminary)	approx. 5 g	approx. 15 g Note: restrictions during HD operation
Temperature during operation (preliminary)	0 °C to + 50 °C	0 °C to + 50 °C Note: restrictions with HD operation
Operating system / Software		
w/o operating system	yes	yes
Windows Embedded Standard 2009	yes (pre-installed & enabled)	yes (pre-installed & enabled)
Windows XP Prof. MUI	yes (pre-installed & enabled)	yes (pre-installed & enabled)
Windows Embedded Standard 7	in preparation	in preparation
Windows 7 Ultimate 32 Bit MUI	in preparation	in preparation
Software bundles	<ul style="list-style-type: none"> • WinAC RTX 2010 (F) and/or • WinCC RT Advanced V11 	<ul style="list-style-type: none"> • WinAC RTX 2010 (F) and/or • WinCC RT Advanced V11
Other		
Retentive memory (optional, without battery)	512 kB, for use with WinAC RTX 128kB	512 kB, for use with WinAC RTX 128kB
NAU Signal to recognize loss of voltage (WinAC RTX)	yes	yes
CMOS batteries	<ul style="list-style-type: none"> • replaceable • battery-less operation possible 	<ul style="list-style-type: none"> • replaceable • battery-less operation possible
Mounting positions	landscape	all mounting positions permitted
Mounting options		<ul style="list-style-type: none"> • mounting rail, wall, portrait, side mounting • Mounting option can be selected in configurator
Approvals	CE, UL, Shipbuilding approval in preparation	CE, UL, Shipbuilding approval in preparation
Dimensions and weight		

Dimensions (W x H x D)	<ul style="list-style-type: none"> • 7": 214 x 158 x 77 mm • 9": 274 x 190 x 77 mm • 12": 330 x 241 x 73 mm 	Device variants: <ul style="list-style-type: none"> • Basis: 191 x 100 x 60 mm • COM: 191 x 100 x 91 mm • IO: 191 x 100 x 91 mm • PCIe: 191 x 187 x 91 mm
panel cutout (W x H)	<ul style="list-style-type: none"> • 7": 196 x 140 mm • 9": 249 x 164mm • 12": 308 x 219mm 	

No guarantee can be provided for the correctness, completeness or up-to-dateness of the information provided here.